

Lumpkin County, Georgia

Work Area Commuting Series

United States Census Bureau
Local Employment Dynamics - OnTheMap



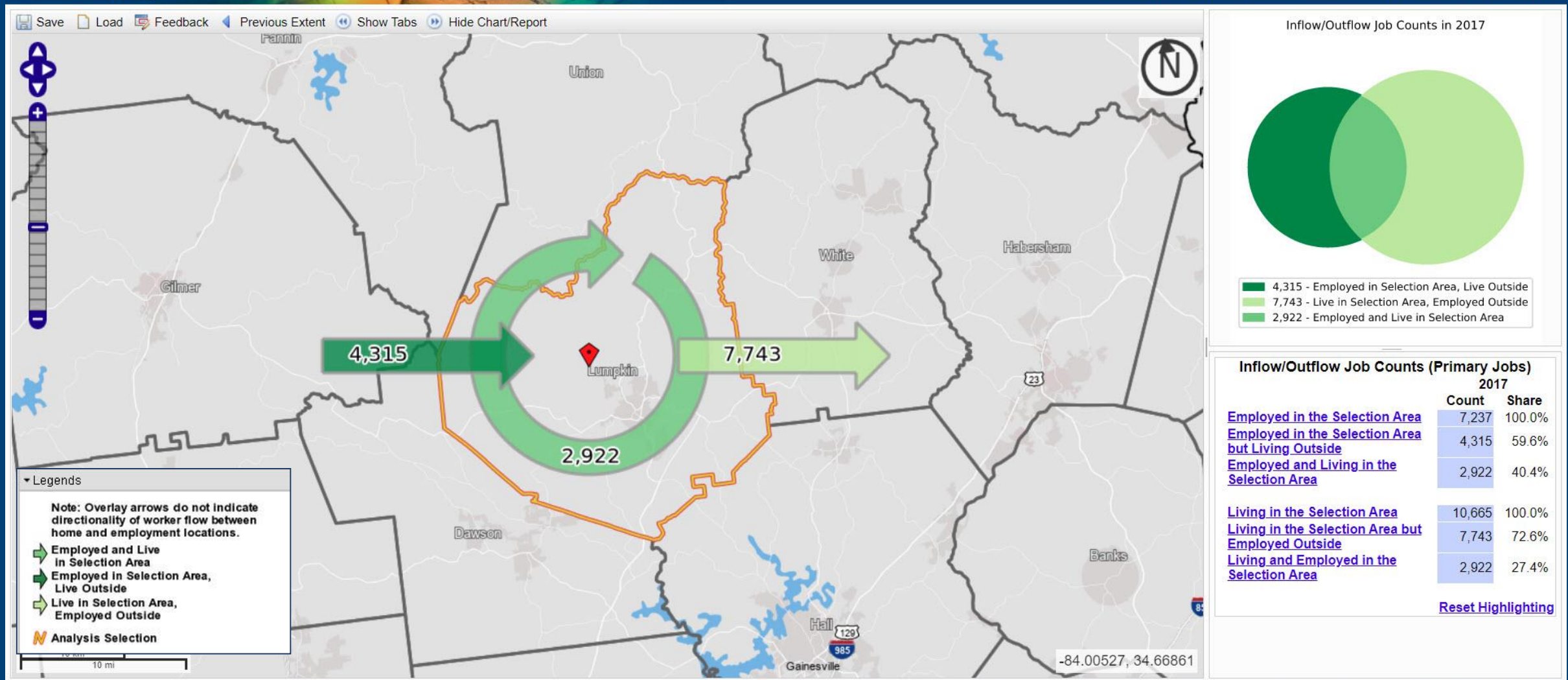
Prepared By:
Workforce Statistics and Economic Research
(404) 232-3875
www.dol.state.ga.us

Lumpkin County, Georgia

Inflow/Outflow Report

OnTheMap

[LEHD Home](#) [Help](#) [and Documentation](#) [Reload](#) [Text-Only](#)



[Privacy Policy](#) | [2010 Census](#) | [Data Tools](#) | [Information Quality](#) | [Product Catalog](#) | [Contact Us](#) | [Home](#)
Source: U.S. Census Bureau, Center for Economic Studies | e-mail: CES.OnTheMap.Feedback@census.gov

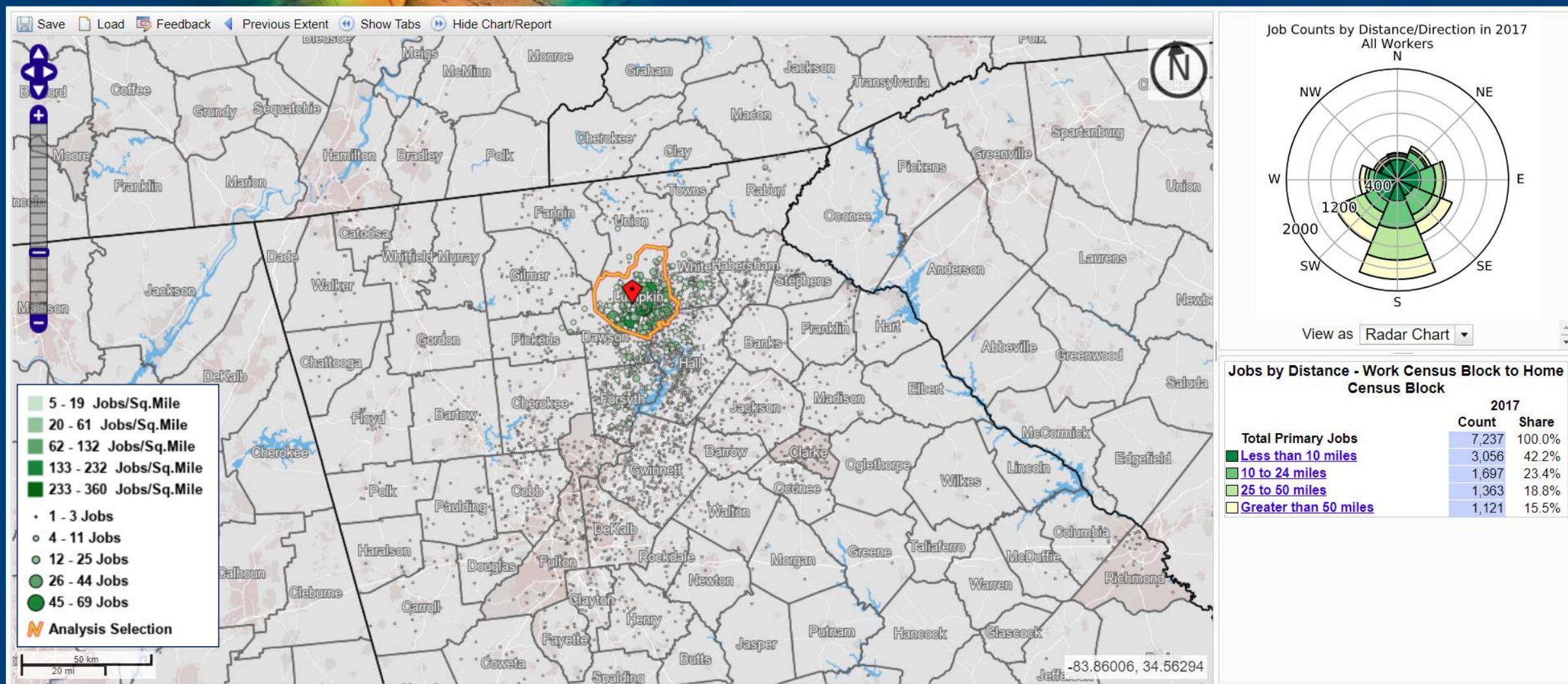
There are 7,237 primary jobs in the area. Approximately 60% (4,315) of these jobs are done by persons living outside of the area. Area residents work the remaining 2,922 primary jobs. Additionally, 7,743 residents leave the area for their primary job.

Lumpkin County, Georgia

Distance Direction Report – Area Workers

OnTheMap

[LEHD Home](#) [Help](#) [and Documentation](#) [Reload](#) [Text-Only](#)



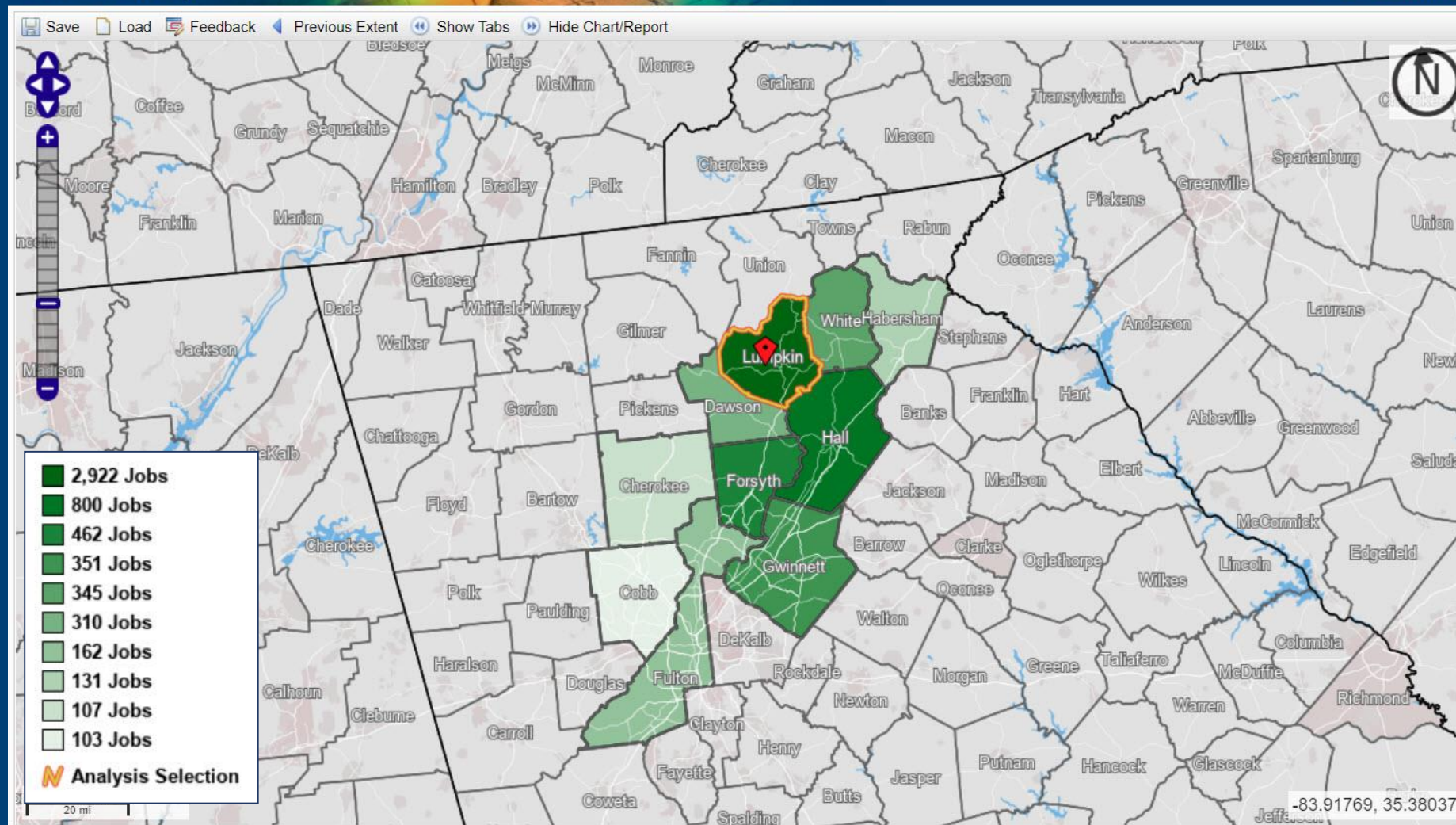
The dots on this map represent where home is for the workers of the 7,237 primary jobs in the area. Approximately 42% of workers drive less than ten miles to get home. Approximately 34% of workers drive in excess of 25 miles to get home.

Lumpkin County, Georgia

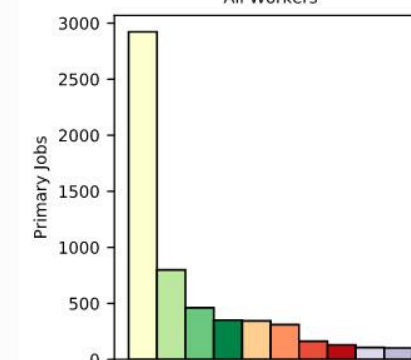
Destination Report – Area Workers

OnTheMap

[LEHD Home](#) [Help and Documentation](#) [Reload](#) [Text-Only](#)



Job Counts by Home Counties in 2017
All Workers



View as **Bar Chart**

Jobs Counts by Counties Where Workers Live -
Primary Jobs

	2017	
	Count	Share
All Counties	7,237	100.0%
Lumpkin County, GA	2,922	40.4%
Hall County, GA	800	11.1%
Forsyth County, GA	462	6.4%
Gwinnett County, GA	351	4.9%
White County, GA	345	4.8%
Dawson County, GA	310	4.3%
Fulton County, GA	162	2.2%
Habersham County, GA	131	1.8%
Cherokee County, GA	107	1.5%
Cobb County, GA	103	1.4%
All Other Locations	1,544	21.3%

[Privacy Policy](#) | [2010 Census](#) | [Data Tools](#) | [Information Quality](#) | [Product Catalog](#) | [Contact Us](#) | [Home](#)
Source: U.S. Census Bureau, Center for Economic Studies | e-mail: CES.OnTheMap.Feedback@census.gov

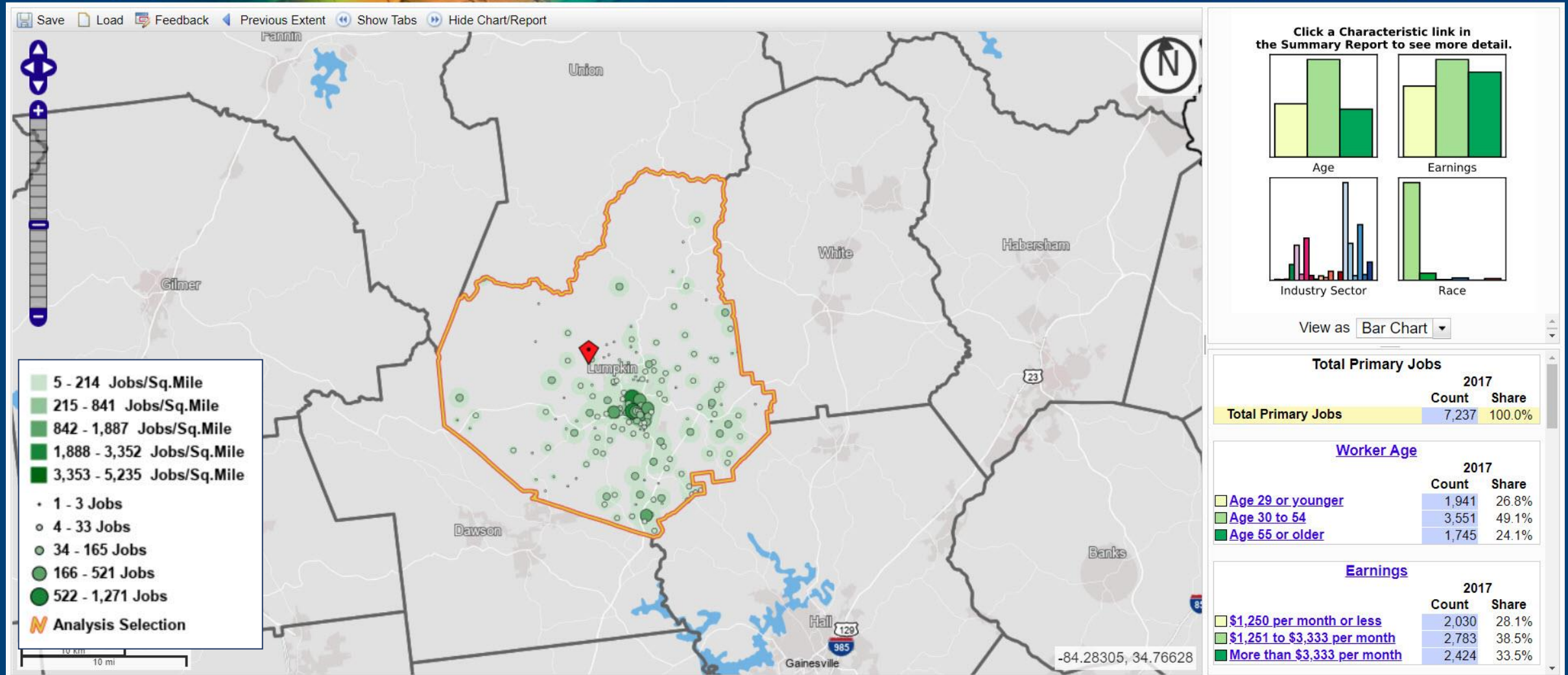
The map shows the top ten home counties for the workers of the 7,237 primary jobs in the area.

Lumpkin County, Georgia

Area Profile Report – Area Workers

OnTheMap

[LEHD Home](#) [Help and Documentation](#) [Reload](#) [Text-Only](#)



[Privacy Policy](#) | [2010 Census](#) | [Data Tools](#) | [Information Quality](#) | [Product Catalog](#) | [Contact Us](#) | [Home](#)
Source: U.S.Census Bureau, Center for Economic Studies | e-mail: CES.OnTheMap.Feedback@census.gov

This map shows the work locations for the 7,237 primary jobs in the area. Additional worker details are shown on the next slide.

Lumpkin County, Georgia

Area Profile Report Details – Area Workers

Total Primary Jobs

	2017	
	Count	Share
Total Primary Jobs	7,237	100.0%

Jobs by Worker Age

	2017	
	Count	Share
Age 29 or younger	1,941	26.8%
Age 30 to 54	3,551	49.1%
Age 55 or older	1,745	24.1%

Jobs by Earnings

	2017	
	Count	Share
\$1,250 per month or less	2,030	28.1%
\$1,251 to \$3,333 per month	2,783	38.5%
More than \$3,333 per month	2,424	33.5%

Jobs by Worker Race

	2017	
	Count	Share
White Alone	6,457	89.2%
Black or African American Alone	465	6.4%
American Indian or Alaska Native Alone	45	0.6%
Asian Alone	149	2.1%
Native Hawaiian or Other Pacific Islander Alone	7	0.1%
Two or More Race Groups	114	1.6%

Jobs by Worker Ethnicity

	2017	
	Count	Share
Not Hispanic or Latino	6,867	94.9%
Hispanic or Latino	370	5.1%

Jobs by NAICS Industry Sector

	2017	
	Count	Share
Agriculture, Forestry, Fishing and Hunting	19	0.3%
Mining, Quarrying, and Oil and Gas Extraction	13	0.2%
Utilities	25	0.3%
Construction	324	4.5%
Manufacturing	725	10.0%
Wholesale Trade	124	1.7%
Retail Trade	870	12.0%
Transportation and Warehousing	97	1.3%
Information	25	0.3%
Finance and Insurance	90	1.2%
Real Estate and Rental and Leasing	56	0.8%
Professional, Scientific, and Technical Services	186	2.6%
Management of Companies and Enterprises	0	0.0%
Administration & Support, Waste Management and Remediation	175	2.4%
Educational Services	2,015	27.8%
Health Care and Social Assistance	761	10.5%
Arts, Entertainment, and Recreation	93	1.3%
Accommodation and Food Services	1,145	15.8%
Other Services (excluding Public Administration)	118	1.6%
Public Administration	376	5.2%

Jobs by Worker Educational Attainment

	2017	
	Count	Share
Less than high school	599	8.3%
High school or equivalent, no college	1,573	21.7%
Some college or Associate degree	1,676	23.2%
Bachelor's degree or advanced degree	1,448	20.0%
Educational attainment not available (workers aged 29 or younger)	1,941	26.8%

Jobs by Worker Sex

	2017	
	Count	Share
Male	3,158	43.6%
Female	4,079	56.4%

These are the available demographic and industry level details for the workers of the jobs in the area from the Work Area Profile Report.